

Museum Makes

Introduction

Create a festive lantern. Inspired by the lanterns in the museum collection. Print out the template or make your own.

Let us see what you create by sharing it with us on Facebook and Twitter by tagging @LinlithgowH and using the hashtag #MuseumMakes

Template Key

.....Fold Line

—————Cut Line

How to Make without the Template:

1. Using a piece of card/paper fold a thin tab along one of the short edges.
2. Take the other short edge and line it up with the fold you just made and make a fold.
3. Fold this in half again and unfold. You should have 4 sides and a tab. Glue along the tab and you have a simple lantern.

Christmas Lantern

You will need:

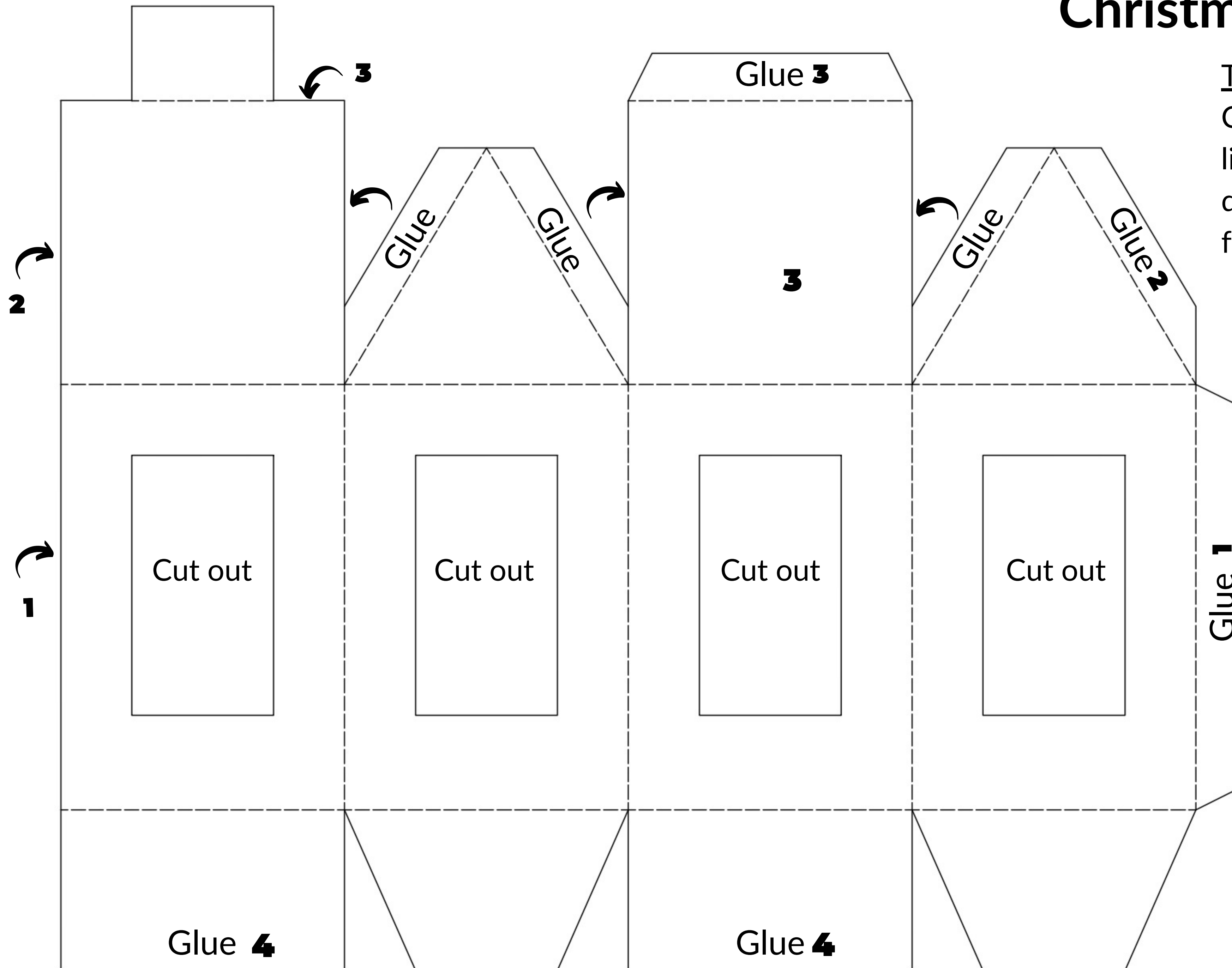
- A4 Card/Paper
- Crayons, Markers or Pencils
- Scissors
- Sticky Tape or Glue
- Materials for the windows (optional)

How to Make with the Template:

1. Print out the template on card/paper.
2. Decorate your lantern before assembling
3. Cut along the solid lines and the windows as indicated.
4. Fold along the dotted lines
5. Create some windows for your lantern using whatever you have. Stick these to the four window spaces.
To create your windows you could use:
 - Tissue Paper
 - Sweet Wrappers
 - Cut out envelope windows or a poly pocket and colour with felt tips/markers
6. Assemble your lantern by gluing the numbered tabs starting from 1.



Christmas Lantern



To Make:
Cut along the solid lines. Fold along the dotted lines. Glue from 1 to 4 in order.

